



## Community Park Parking Information

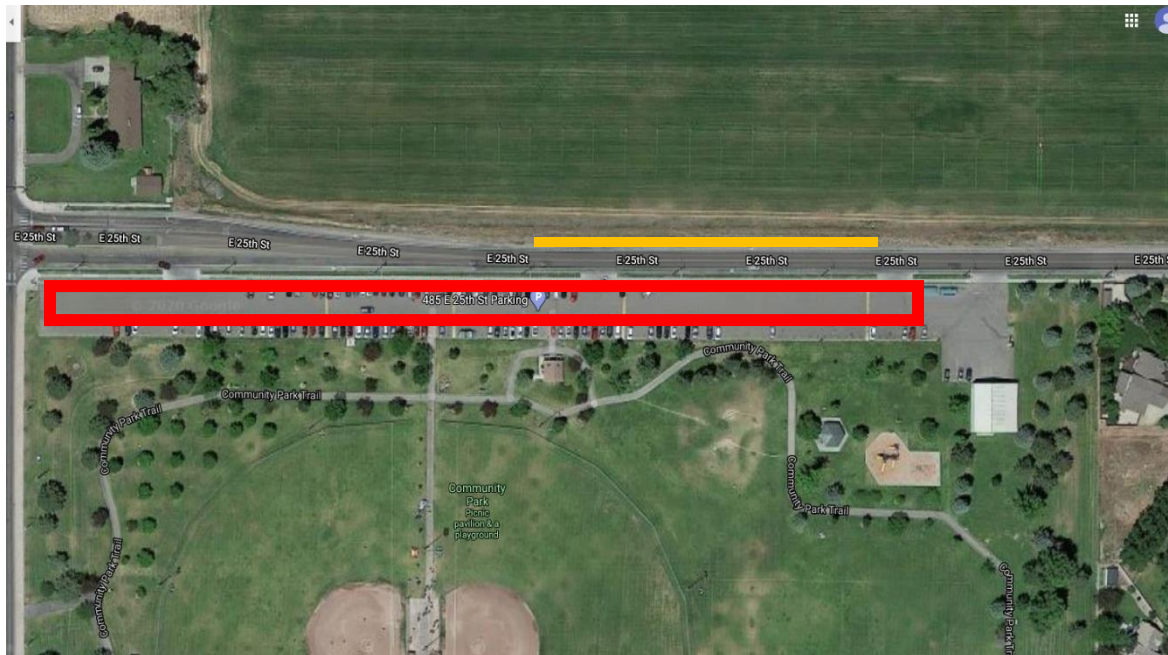
### Special Events and Sports Tournaments


Tournament Directors and Event Organizers: It is your responsibility to share this information with your attendees.

Limited parking is available at Community Park. The park parking lot accommodates approximately 200 vehicles.

There is additional **legal**, but limited, parking along 25<sup>th</sup> Street that will accommodate approximately 25 vehicles. Drivers must read and adhere to posted parking signs when parking on 25<sup>th</sup> Street to ensure they are **legally** parked. **Illegally** parked vehicles are subject to **parking citations**.

25<sup>th</sup> Street includes a **bike path** on the North side of the road. When parking along 25<sup>th</sup> Street, vehicles must park far enough off the road (off the pavement) that they are **not obstructing** the bicycle lane. Obstructing the lane may result in a citation.



 This area indicates the legal parking area along 25 street. (This diagram is for informative purposes only. Please ensure you are legally parked when you get to the park, based on the posted signs)

 Community Park Parking Lot

We recommend car pooling when possible to consolidate the number of vehicles at the park per each team or groups attending.

**Trailers and RV's are not allowed in the Community Park Parking Lot**